



Prolunga in ottone cromato per canotto con o-ring di tenuta

Chrome plated brass connection for pipe, with o-rings on both sides

cod.	misura	pz. x conf.	euro cad.
6002000026	26 mm	10	3,300
6002000030	30 mm	10	3,720
6002000032	32 mm	10	3,820
6002000040	40 mm	10	5,760



Giunto in ottone cromato ridotto con o-ring di tenuta

Chrome plated brass connection, fixing o-ring on both sides

cod.	misura	pz. x conf.	euro cad.
6001CR3226	32 x 26 mm	10	4,500
6001CR4032	40 x 32 mm	10	5,500



Manicotto in gomma nera per giunzione canotto

Black rubber tube connection

cod.	misura	pz. x conf.	euro cad.
6004G26X26	26 x 26 mm	10	1,653
6004G26X32	26 x 32 mm	10	1,200
6004G32X32	32 x 32 mm	10	2,115
6004G40X26	40 x 26 mm	10	1,795
6004G40X32	40 x 32 mm	10	1,363
6004G40X40	40 x 40 mm	10	1,363



Giunzione in PP bianco con 2 ghiera e guarnizione di tenuta

White PP connection with 2 nuts and fixing gasket

cod.	misura	pz. x conf.	euro cad.
6004PL0026	26 x 26 mm	10	6,160
6004PL2632	26 x 32 mm	10	6,750
6004PL0032	32 x 32 mm	10	6,160
6004PL3240	40 x 32 mm	10	6,750
6004PL0040	40 x 40 mm	10	6,750



Rosone in ottone cromato per canotti eccentrici ø105 mm

Chrome plated brass rosette for excentric pipe ø105 mm

cod.	misura	pz. x conf.	euro cad.
1236000026	foro 26 mm	10	6,100
1236000030	foro 30 mm	10	6,100
1236000032	foro 32 mm	10	6,100



Rosetta per rubinetto in ottone cromato ø 60 mm

Tap chrome plated brass rosette ø 60 mm

cod.	misura	pz. x conf.	euro cad.
125000000C	foro 3/8"	100	0,700
125000000D	foro 1/2"	100	0,700

Rosetta per rubinetto in acciaio inox ø 60 mm

Stainless steel tap rosette ø 60 mm

cod.	misura	pz. x conf.	euro cad.
1250I0000C	foro 3/8"	100	0,170
1250I0000D	foro 1/2"	100	0,170



	cod.	misura	pz. x conf.	euro cad.
Rosetta per rubinetto tipo sagomato in ottone cromato ø 60 mm	125100000C	3/8"	100	0,650
	125100000D	1/2"	100	0,680

Rosette for tap "shaped type" in chrome plated brass ø 60 mm



	cod.	misura	pz. x conf.	euro cad.
Rosetta foro esagonale Rosette with hexagonal hole	5003I0000C	3/8"	100	0,200
	5003I0000D	1/2"	100	0,200



	cod.	misura	pz. x conf.	euro cad.
Rosetta per rubinetto tipo maggiorato in ottone cromato ø 70 mm Rosette for tap "oversize type" in chrome plated brass ø 70 mm	1250GS000C	foro 3/8"	100	1,450
	1250GS000D	foro 1/2"	100	1,450
	1250GS000F	foro 3/4"	100	1,450
	1250GS000G	foro 1"	100	1,450



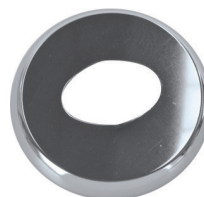
	cod.	misura	pz. x conf.	euro cad.
Rosetta in ottone cromato tipo apribile ø 55 mm Chrome plated "openable type" rosette ø 55 mm	1256000010	ø int. 10 mm	50	1,900
	1256000012	ø int. 12 mm	50	1,900
	1256000014	ø int. 14 mm	50	1,900
	1256000016	ø int. 16 mm	50	1,900
	125600000C	ø int. 3/8"	50	1,870
	125600000D	ø int. 1/2"	50	1,870
	125600000F	ø int. 3/4"	50	2,380
	125600000G	ø int. 1"	50	2,380
	125600000GB	ø int. 1"1/4	50	2,430



	cod.	misura	pz. x conf.	euro cad.
Rosetta tipo conico per canotto in ottone cromato ø 77 mm Rosette for pipe "conical type" in chrome plated brass external ø 77 mm	1253000026	foro 26 mm	50	2,320
	1253000030	foro 30 mm	50	2,320
	1253000032	foro 32 mm	50	2,320
	1253000040	foro 40 mm	50	2,320



	cod.	misura	pz. x conf.	euro cad.
Rosetta per canotto in ottone cromato ø 75 mm Rosette for pipe in chrome plated brass ø 75 mm	1252000026	foro 26 mm	25	1,260
	1252000030	foro 30 mm	25	1,260
	1252000032	foro 32 mm	25	1,260



	cod.	misura	pz. x conf.	euro cad.
Rosetta ovale gigante tipo "C" in ottone cromato Chrome plated brass giant oval rosette "C" type	12550VCATI	ø est. 95 mm	10	6,100



	cod.	misura	pz. x conf.	euro cad.
Rosetta in ottone cromato a scatola ø 60 mm Chrome plated "box shape" rosette external ø 60 mm	1254000C10	h 10 mm ø int. 3/8"	50	1,130
	1254000C15	h 15 mm ø int. 3/8"	50	1,310
	1254000C20	h 20 mm ø int. 3/8"	50	1,550
	1254000D10	h 10 mm ø int. 1/2"	50	1,200
	1254000D15	h 15 mm ø int. 1/2"	50	1,380
	1254000D20	h 20 mm ø int. 1/2"	50	1,620
	1254000D30	h 30 mm ø int. 1/2"	50	2,750
	1254000F10	h 10 mm ø int. 3/4"	15	1,130
	1254000F15	h 15 mm ø int. 3/4"	15	1,310
	1254000F20	h 20 mm ø int. 3/4"	15	1,880